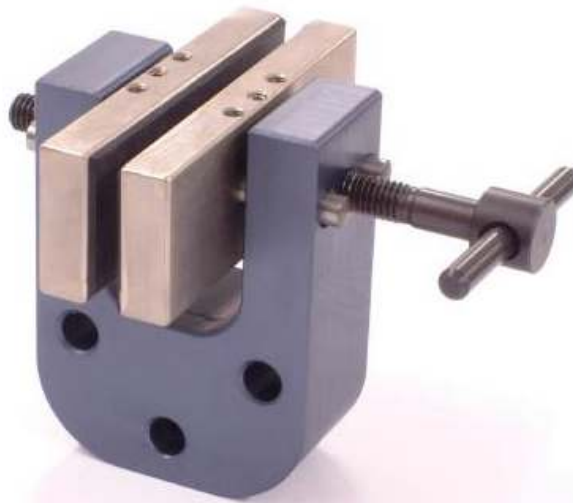


Vice Action grips (Screw type grips)

Screw Type Grip 1 kN



Article Number	TH240-k
Recommended for	Tensile testing of flat materials

Maximum Capacity	1 kN
Sample Dimensions	Sample thickness 0-8 mm
Eye End Diameter	R20/8
Dimensions	Height 80 mm
Weight Each	0,3 kg
Packaging	1 Pair Grips without Jaw Faces

Grip Jaw Faces (order additional)

TH240-k-BG50	Jaw Faces, Rubber, Clamping Area 30x50 mm
TH240-k-BG80	Jaw Faces, Rubber, Clamping Area 30x80 mm
TH240-k-BP50	Jaw Faces, Steel, Clamping Area 30x50mm, Cross Cut
TH240-k-BP80	Jaw Faces, Steel, Clamping Area 30x80mm, Cross Cut
TH240-k-BW50	Jaw Faces, Steel, waved, Clamping Area 30x50 mm