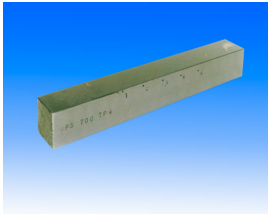


ACCESSORIES FOR MAGNETIC PARTICLE INSPECTION

Division of ITW Ltd

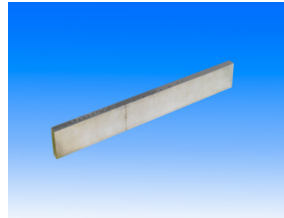
MAGNAFLUX[®]



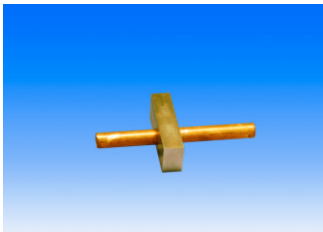
**MAGNETIC FLOW /COIL
TEST PIECES**
Pt No 026T002 RPS700
Pt No 026T042 BS6072



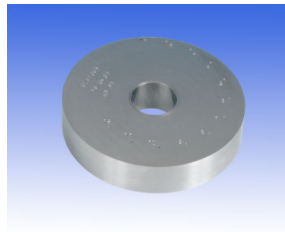
CURRENT FLOW TEST PIECES
0-1000A Pt No 026T001 BS6072 RPS700
1000-3000A Pt No.027T003 RPS700
3000 5000A Pt No 027T004 RPS700



MAGNETIC PARTICLE TEST PIECE
Pt No 189838
Contains coarse and fine artificial surface and sub-surface defects in both directions. Meets or exceeds most specifications for artificial test specimens including MIL-STD-271



TEST BLOCKS
Pt No 026T007
Wet residual go/no go test block which provides a quick check on quality.
A wet continuous test block is also available under
Pt No 026T006



KETOS TEST RING
Pt No 026T005
The ketos ring has a number of artificial defects for both Dry Powder and Wet Method and meets ASTM E1444



BERTHOLD PENETRATOR
Pt No 008M006
Checks magnetisation, penetration depth, quality of fluorescent suspension and magnetic field direction



ASME FIELD INDICATOR
Pt No 008M003
Used to gauge the strength and direction of the magnetic field in accordance with ASME Boiler and Pressure Vessel Code Section V



FIELD INDICATOR
Pt No 008M001
Magnetometer used to determine if a component is magnetised



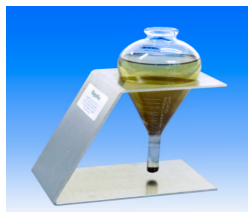
CALIBRATED FIELD INDICATOR
Pt No 008M002
Scaled to +/- 20 gauss from zero for determining the level of residual magnetism to 5% of full-scale reading.
Pt No 505056
As above except scaled to +/- 10 gauss



PRINCIPLES OF M P I

Pt No 020B001

A 528 page book covering the theory, science art and practice of all types of magnetic particle inspection.
Author C E BETZ



CENTRIFUGE TUBE & STAND

Essential items in ascertaining bath concentration.

Centrifuge Tube **Pt No 044C003**

Meets the requirements of ASTM D96 and BS4069.

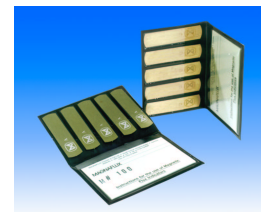
Centrifuge Stand **Pt No044C004**



CONTACT BLOCK

Pt No 023A007

Clamps between the head and tailstock of the bench unit to allow prods, split coils, leeches etc. to be attached.



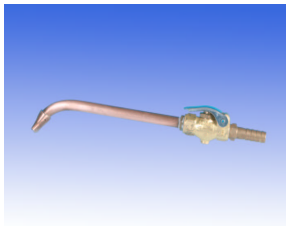
MAGNETIC INDICATOR STRIPS

Used to provide a guide to the strength of the magnetic field at the precise point of their location.

Complies with BS4142 and BS6072.

Pt No 008M004 Type 1 for general use.

Pt No 008M005 Type II for aerospace work.



MAGNAGLO APPLICATOR

Pt No 004G006

Replacement nozzle for bath applications. Attaches quickly to bath applicator hose.



POLYSPRAY

Pt No 004G004

An inexpensive spray unit for the application of magnetic ink



POWDER DISPENSER

Pt No 008D003

A powder 'puffer' for the application of dry magnetic powder.

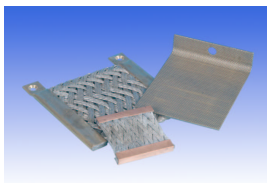


POWDER BLOWER

Pt No 58600

Low cost gun for applying MAGNAFLUX dry powder in production conditions.

Regulated air-only blow off removes excess powder. Requires only 2 bar air supply

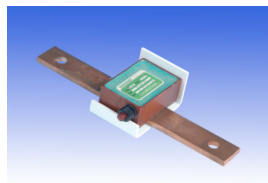


CONTACT PADS

Bench testing units employ contact pads to improve electrical contact with the component

Replacement pads are available as follows:

Part No.	Area (mm)	Material
031C003	145 x 125	Copper braid – Neoprene
031C010	45 x 65	Copper braid
031C012	60 x 65	Brass mesh
031C014	96 x 125	Copper braid
031C016	100 x 120	Brass mesh
031C020	145 x 125	Copper braid



QUICK BREAK TESTER

Pt No 148335

Quickly and accurately confirms function status of 'quick break' circuitry in FWDC magnetic particle units. Manufactured for compliance to ASTM E1444.

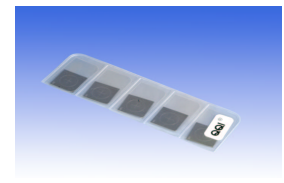


CENTRAL CONDUCTORS

Kerosene resistant insulated copper bars used where components have through holes, thin wall or offset when insufficient current available for single shot.

Pt No 028T002 12mm dia x 300 mm long.

Pt No 028T004 25mm dia x 600 mm long.



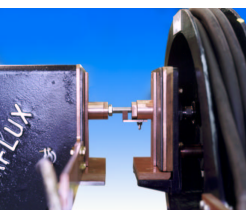
Q.Q.I.

Artificial flaw shim standards improve inspection reliability by verifying magnetic field direction and relative strength at all critical areas of a component. Ideal for multi-directional magnetisation.

Pt No 519630 Model KSC-230 Standard

Pt No 519631 Model KSC-4-230 Miniature

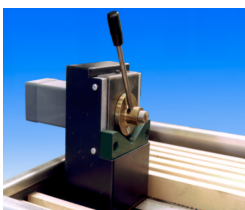
Pt No 519632 Model KSC-234 Variable depth



AUXILIARY ADAPTORS

Pt No 030C009

These auxiliary adaptors fit on to the head and tailstocks of the MAG50 bench units to assist in the handling of short/small parts.



AUXILIARY ADAPTORS

Pt No 030C026

This auxiliary adaptor fits on to the head or tailstock of the MAG40 bench units to assist in the handling of short/small parts, also eliminates need for pneumatic clamping by having spring loaded clamp mechanism.



STEADY REST

Pt No 20955 A3

MAG50 Bench mounted twin roller steady rest allows rotation of components.



STEADY REST

Pt No 20978 A1

The twin rollers of the steady allow rotation of components. It is fixed directly to the headstock.

MAGNAFLUX® A Division of *ITW* Ltd.

Faraday Road, South Dorcan Industrial Estate, Swindon SN3 5HE, Wiltshire. U.K. Email sales@magnaflux.co.uk
Tel. No. 01793 524566 Fax. No. 01793 619498

3624 West Lake Avenue. IL 60025 U.S.A. www.magnaflux.com
Tel, No 847- 657- 5300 Fax, No, 847- 657- 5388